

RPM217



In the background, an RPM227 snow blower in action in the Andes at Tudcum, Argentina.



**TWO STAGE DUAL AUGER
DETACHABLE SNOW BLOWER**

WHAT MAKES US STAND OUT AND GIVES US A HEAD START

HEAVY DUTY CONTROL AND DISPLAY SYSTEM PLUS +1 FROM SAUER DANFOSS

- A controller using a multiplex CAN communication.
- High resolution grayscale LCD display of 2 in. x 4½ in.
- A 4-button CANBUS joystick with all functions integrated.
- One key ignition switch.
- Two-page display of the following information: engine revolution (rpm), engine oil pressure (psi), engine coolant temperature (°F), system voltage (V), engine load factor, fuel level, engine hour meter, engine alarm lights, clutch engagement light, work lights state, and detailed textual description of errors.
- Visual and audible alarms: low engine oil pressure light, high engine temperature light (air and coolant), low charge voltage light, system error light, low fuel level.
- Visual alarm only: starting aid, drum lock state, maintenance lamp.
- Service menu allows:
 - ◆ Configuration of the clutch
 - ◆ Configuration of the joystick
 - ◆ Setting of the language (English or French)
 - ◆ Reading of stored engine codes
 - ◆ Creation of a password to protect the configurations
 - ◆ Consultation of the records of the last 15 maintenance dates
- Controls:
 - ◆ Hydraulic operation through joystick control
 - ◆ Engine speed (RPM's) through joystick control
 - ◆ Control of working lights and/or chute headlights (optional features)
 - ◆ Switch activated clutch engagement on the control board
- Two emergency stops, one on the snow blower and one on the joystick box.



HIGH RESOLUTION GRAYSCALE LCD DISPLAY AND PLUS +1 JOYSTICK FROM SAUER DANFOSS



CUSTOM MADE SNOW BLOWERS

All our models of snow blowers can be modified and custom made to meet specific needs.

Our team of qualified engineers and technicians work with clients to propose necessary modifications to the snow blowers to fulfill their specific winter conditions needs and/or applications.

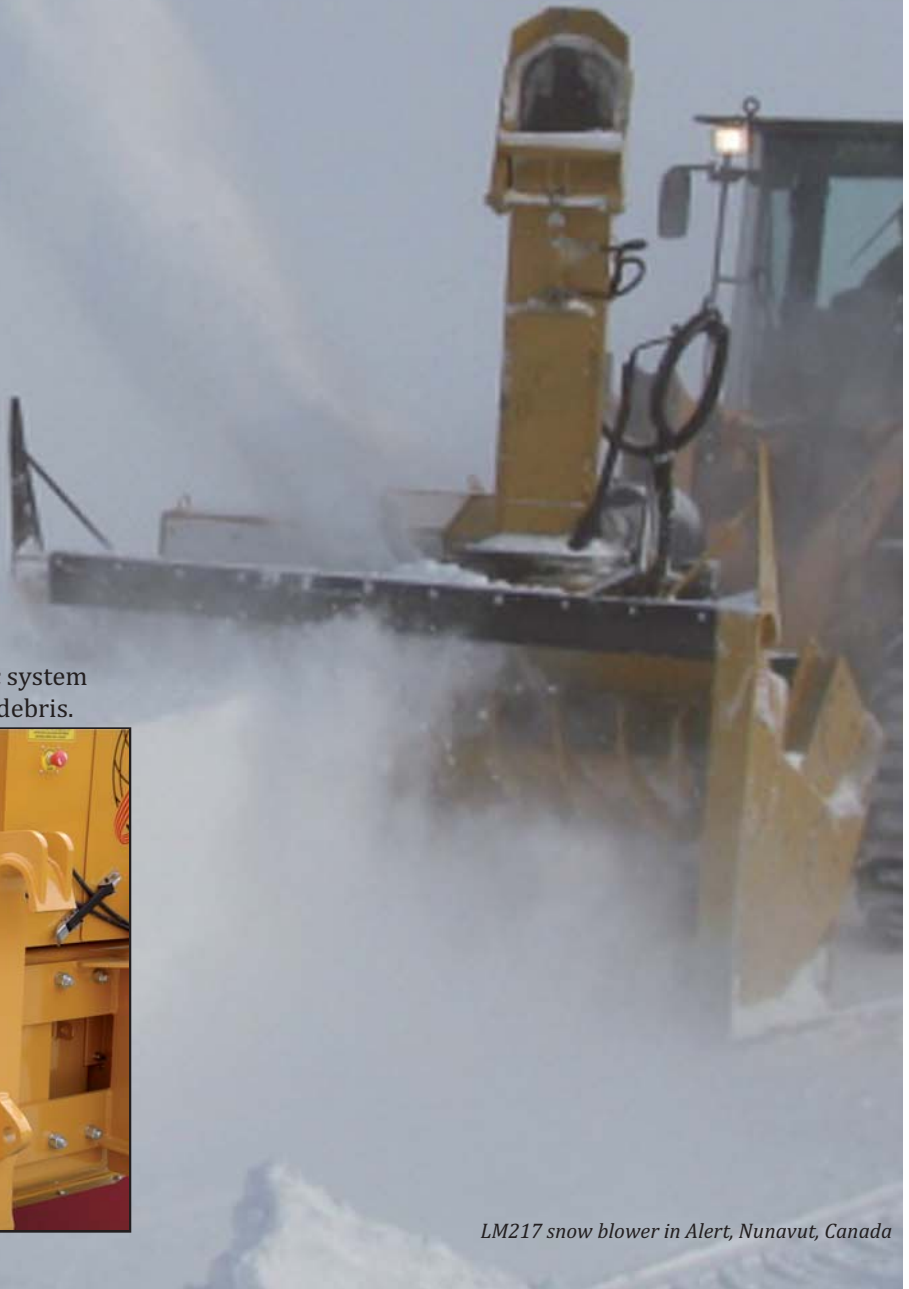


Two optional work lights can be installed on top of the snow blower body to improve visibility during snow removal operations.

Two sets of shear bolts protect the impeller and the augers and are easily accessible for maintenance.



The electrical box is sealed, and the hydraulic system for the valves and controls is protected from debris.



LM217 snow blower in Alert, Nunavut, Canada

RPM217 – TECHNICAL SPECIFICATIONS

PERFORMANCE

- Capacity¹: Up to 2000 tons/hour
- Projection¹: Up to 46 m (150 ft)

DIMENSIONS

- Overall width: 2794 mm (110 in.)
- Overall height: 3277 mm (129 in.)
- Overall length: 1854 mm (73 in.) max. without female coupler
- Weight: 3447 kg (7600 lb) approx.

AUGERS

- Drive: Mechanical
- Diameter: Two (2) interchangeable 431 mm (17 in.) diameter open flight augers welded in one (1) piece

IMPELLER AND DRUM

- Impeller:
 - ♦ Five (5) bolted on and concave impeller blades
 - ♦ Diameter of 851 mm (33 ½ in.)
- Drum:
 - ♦ Diameter of 864 mm (34 in.)
 - ♦ The impeller casing is hydraulically operated
 - ♦ Rotation of 150°
- Projection¹: Up to 46 m (150 ft)

FRAME

- Fully welded construction
- The frame is made of a triangular design to allow an optimal distribution of the effort from the front end of the snow blower to the quick attach

FIXED STEERING VANES

- Height: 1879 mm (74 in.)

STANDARD TELESCOPIC CHUTE

- Diameter: 304 mm (12 in.)
- Sections: Two (2) vertical sections, one (1) directional section and two (2) flexible sections
- Extension: 762 mm (30 in.) hydraulic extension to allow the loading chute to cast at any adjustable height from 3175 to 3937 mm (125 to 155 in.)
- Rotation: 300° minimum
- Projection¹: Up to 12 m (40 ft)

ENGINE

- Make and model: Cat® C6.6, 151 kW (202 hp) electronic Turbo Diesel Tier 3 engine
- Block heater: 1000 W

FUEL TANK

- Type: Steel
- Capacity: 211 L (56 gal)

HYDRAULIC SYSTEM

- Type: Hydraulic pump of 23 L/min (6 US GPM) directly mounted on engine auxiliary drive
- Capacity: 9 L (2.4 gal)

ELECTRICAL SYSTEM

- Alternator: 12 V, 100 A, sealed
- Batteries: Two (2) type 31 - 2250 CCA, maintenance free

DRIVELINE SYSTEM

- Clutch: Twin Disc, model SP-111
- Type: Chain and gear driven with a spiral reduction bevel gear box
- Lubrification: Oil bath
- Safety mechanism: Two (2) sets of shear bolts protect the impeller and the augers

INSTRUMENT PANEL AND CONTROLS

- Model: Heavy duty control and display system PLUS +1 from Sauer Danfoss
- Controls:
 - ♦ One controller using a multiplex CAN communication
 - ♦ One high resolution grayscale LCD display of 2 in. x 4 ½ in.
 - ♦ One joystick with integrated functions
 - ♦ One key ignition switch

SKATES AND SCRAPER BLADE

- Quantity:
 - ♦ Two (2) external skates
 - ♦ Four (4) internal skates
- Type: 44W steel skates
- Blade: One (1) reversible CHT 100 steel scraper blade

OPTIONAL EQUIPMENT

- 256 color LCD screen of 3 ⅞ in. x 5 ¾ in.
- Arctic lubrication kit (temperature under -25°C (-13°F))
- Battery heater
- Bolted ice breakers for augers
- Carbide bottom cutting edge
- Carbide chrome 60Rc (drum and chute)
- Door on the internal section of the chute to remove snow
- Hydraulic oil heater
- Low coolant level alarm
- Quick attach compatible with all loader-mounted models
- Residential Cowl muffler
- Skidshoes with carbide inserts
- Spin-on type Racor filter with heated water separator
- Wireless control system
- Wireless emergency engine shutdown system
- Work lights on the loading chute and/or the snow blower body

¹Depending on snow conditions.

2014.01 ~ RPM Tech Inc. reserves the right to change or discontinue any designs, specifications, features, models or accessories shown or indicated without notice.

ISO 9001:2008



www.rpmttechgroup.com

R.P.M. TECH INC.

2220 Michelin Street
Laval (Quebec) H7L 5C3 CANADA
Tel.: 450.687.3280 • Fax: 450.781.8811
Toll free: 1.800.631.9297

184 Route 138
Cap-Sante (Quebec) G0A 1L0 CANADA
Tel.: 418.285.1811 • Fax: 418.285.4476
Toll free: 1.800.463.3882

Email: info@rpmttechgroup.com

Dealer

